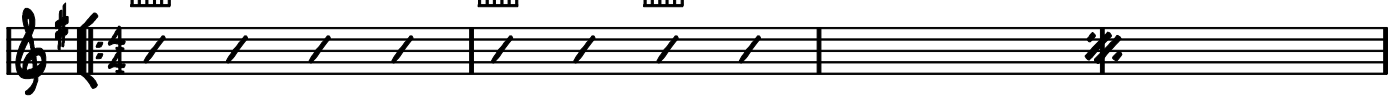


OVER MY HEAD (CABLE CAR) - THE FRAY (CAPO 1)



1.) I NEVER KNEW
2.) GOT TO BE

I NEVER KNEW THAT EVERYTHING WAS FALLING THROUGH THAT EVERYONE I KNEW WAS WAITING
IT'S COMING DOWN TO NOTHING MORE THAN APATHY I'D RATHER RUN THE OTHER WAY THAN



ON A QUEUE TO TURN AND RUN WHEN ALL I NEEDED WAS THE TRUTH BUT THAT'S HOW IT'S
STAY AND SEE THE SMOKE AND WHO'S STILL STANDING WHEN IT CLEARS

CHORUS:

C G Em D C G Em D



EVERYONE KNOWS I'M IN OVER MY HEAD OVER MY HEAD WITH

C G Em D C G Em D



EIGHT SECONDS LEFT IN OVERTIME SHE'S ON YOUR MIND SHE'S ON YOUR MIND

C: Csus2 | Em7 Gmaj7 | Csus2 | Em7 Gmaj7 | Csus2 |

3.) LET'S REARRANGE I WISH YOU WERE A STRANGER I COULD DISENGAGE JUST SAY THAT WE AGREE AND THEN NEVER CHANGE

4.) DISREGARD FIND ANOTHER FRIEND AND YOU DISCARD AS YOU LOSE THE ARGUMENT IN A CABLE CAR

| Em7 Gmaj7 | Am7 | :)

SOFTEN A BIT UNTIL WE ALL JUST GET ALONG BUT THAT'S

HANGING ABOVE AS THE CANYON COMES BETWEEN

CHORUS (2x)

BRIDGE:

|| Csus2 | Em7 G | Csus2 | Em7 G/A | Csus2 | Em7 G | Am7 | ||

SUDDENLY I BECOME A PART OF YOUR PAST I'M BECOMING THE PART THAT DON'T LAST I'M LOSING YOU AND ITS EFFORTLESS

|| Csus2 | Em7 Gmaj7 | Csus2 | Em7 Gmaj7 | Csus2 |

WITHOUT A SOUND WE LOSE SIGHT OF THE GROUND IN THE THROW AROUND NEVER THOUGHT THAT YOU WANTED TO BRING IT DOWN I WON'T

| Em7 Gmaj7 | Am7 | ||

LET IT GO DOWN TILL WE TORCH IT OURSELVES

CHORUS (BREAKDOWN)

AND EVERYONE KNOWS I'M IN OVER MY HEAD OVER MY HEAD WITH EIGHT SECONDS LEFT IN OVERTIME SHE'S ON YOUR MIND SHE'S ON YOUR

CHORUS (2x):

MIND EVERYONE KNOWS SHE'S ON YOUR MIND EVERYONE KNOWS I'M IN OVER MY HEAD I'M IN OVER MY HEAD I'M IN OVER...

EVERYONE KNOWS I'M IN OVER MY HEAD OVER MY HEAD WITH EIGHT SECONDS LEFT IN OVERTIME SHE'S ON YOUR MIND SHE'S ON YOUR MIND

|| Csus2 | Em7 Gmaj7 | Csus2 | Em7 Gmaj7 | Csus2 | Em7 Gmaj7 | Csus2 (END) ||